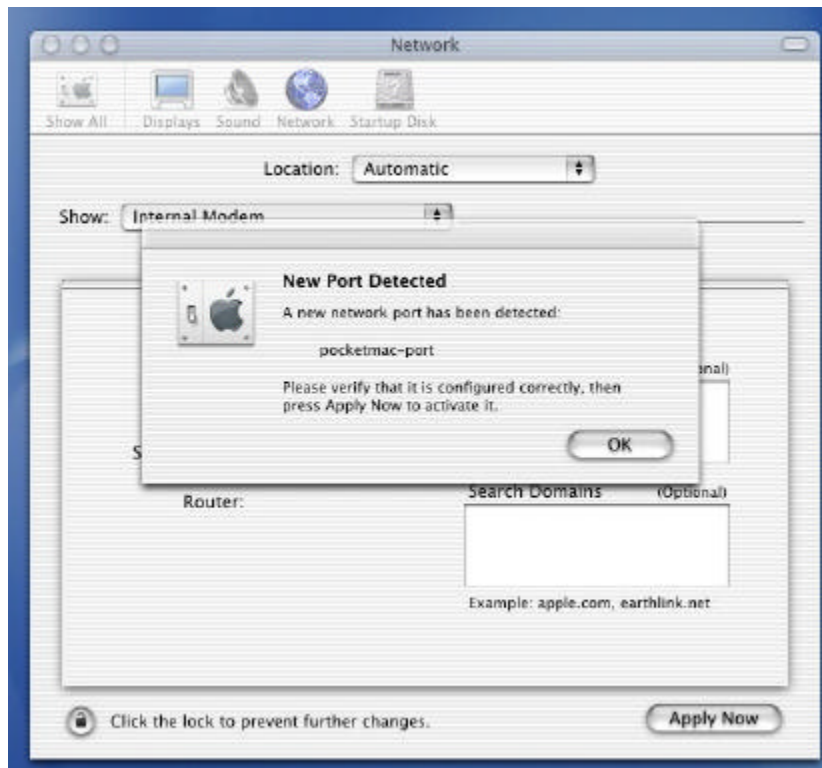


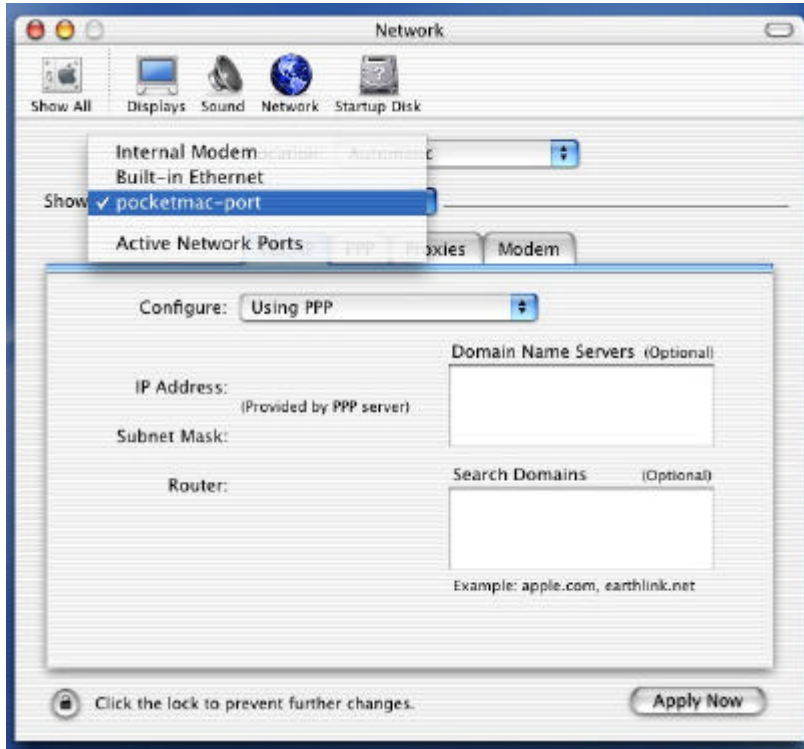
How to Configure PocketMac Pro after installation & restart -- a simple 5-step process.

1. Connect your Pocket PC to your Mac via USB.

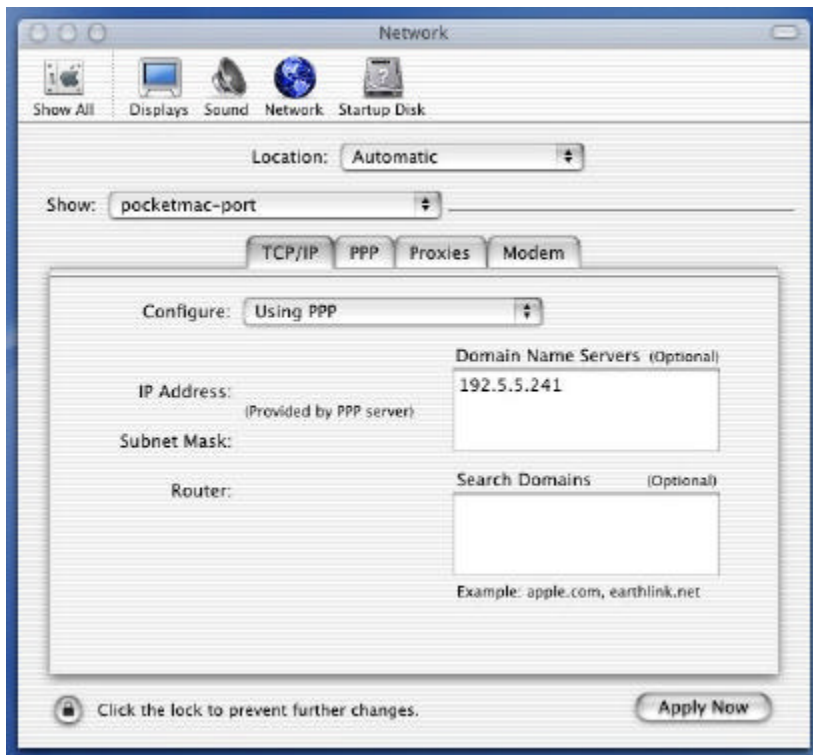
2. Open the Network Settings page in System Preferences. It will tell you it has found a new port, as shown here:



3. Select the PocketMac Port, as shown here:



4. Enter 192.5.5.241 in the Domain Name Servers box, as shown here



5. Click "Apply Now". That's it! You're ready to run PocketMac.